

# Specifications

## SH330(LC)/350HD(LHD)-5 Technical Data Engine

SH330(LC)-5/SH350HD(LHD)-5	
Model	ISUZU AH-6HK1XYSS
Type	Water-cooled, 4-cycle, diesel, 6-cylinder in line, direct injection (electric control), turbocharger with air cooled intercooler.
Rated output	202 kW · 274 PS/2,000 min <sup>-1</sup>
Maximum torque	1,080 N·m at 1,500 min <sup>-1</sup>
Piston displacement	7,790 cc
Bore and stroke	115 mm x 125 mm
Starting system	24 V electric motor starting
Alternator	24 V, 50 A
Fuel tank	580 liters
Air filter	Double element

### SIH:S

Two variable displacement axial piston pumps, one gear pump for pilot controls and the electronic-controlled engine of SPACE5 and SIH:S (SUMITOMO Interigent Hydraulic System) includes: three working mode (SP,H,A) one-touch/automatic idling system and automatic power-boost.

### Hydraulic pumps

Two variable displacement axial piston pumps supply power for attachment, swing and travel.

SH330(LC)-5/SH350HD(LHD)-5	
Maximum oil flow	2 x 290 liters/min
Pilot pump max.oil flow	30 liters/min

### Hydraulic motors

For travel: Two variable displacement axial piston motors  
For swing: One fixed displacement axial piston motor

### Working circuit pressure

Boom/arm/bucket .....34.3 Mpa(350 kgf/cm<sup>2</sup>)  
Boom/arm/bucket .....37.3 Mpa(380 kgf/cm<sup>2</sup>)with auto power-up  
Swing circuit .....30.4 Mpa(310 kgf/cm<sup>2</sup>)  
Travel circuit .....34.3 Mpa(350 kgf/cm<sup>2</sup>)

### Control valve

With boom/arm holding valve  
One 4-spool valve for right track travel, bucket, boom and arm acceleration  
One 5-spool valve for left track travel, auxiliary, swing, boom acceleration and arm

### Oil filtration

Return filter ..... 6 microns  
Pilot filter ..... 8 microns  
Suction filter ..... 105 microns

### Hydraulic cylinders

SH330(LC)-5/SH350HD(LHD)-5		
Boom	2	145 mm x 100 mm x 1495 mm
Arm	1	170 mm x 120 mm x 1748 mm
Bucket	1	150 mm x 105 mm x 1210 mm

Double-acting, bolt-up-type cylinder tube-end; hardened steel bushings are installed in the cylinder tube and rods ends.

### Cab & Controls

The cab is mounted on 4 fluid mountings. Features include safety glass front, rear and side windows, reclining/sliding cloth upholstered suspension seat with headrest and armrest, cigarette lighter, pop-up skylight window, and intermittent wiper with washer. The front window slides upward for storage, and the lower front window is removable. Control levers are located in 4 positions with tilting control consoles. Reliable soft-touch switches are a standard feature. An easy-to-read full-dot LCD monitor keeps operation in touch with critical machine functions.

### Swing

Planetary reduction is powered by an axial piston motor. The internal ring gear with has a grease cavity for pinion. The swing bearing is a single-row shear type ball bearing. Dual stage relief valves are used for smooth swing deceleration and stops. A mechanical disc swing brake is included.

SH330(LC)-5/SH350HD(LHD)-5	
Swing speed	0~9.8 rpm
Tail swing radius	3,450 mm
Swing torque	112 kN·m · 11,420 kgf·m

### Undercarriage

An X-style carbody is integrally welded for strength and durability. The grease cylinder track adjusters have shock absorbing springs. The undercarriage has lubricated rollers and idlers.

### Type of shoe: sealed link shoe

#### Upper rollers -

Heat treated, mounted on steel bushings with leaded bronze casting, sealed for lifetime lubrication.

#### Lower rollers -

Heat treated, mounted on steel bushings with leaded bronze casting, sealed for lifetime lubrication.

#### Track adjustment -

Idler axles adjusted with grease cylinder integral with each side frame; adjustment yoke mechanism fitted with heavy duty recoil spring.

### Number of rollers and shoes on each side

SH330-5/SH350HD-5	
Upper rollers	2
Lower rollers	7
Track shoes	45

SH330LC-5/SH350LHD-5	
Upper rollers	2
Lower rollers	8
Track shoes	48

### Travel System

Two-speed independent hydrostatic system with compact axial motors for increased performance. Hydraulic motor powered output shaft coupled to a planetary reduction unit and track sprocket. All hydraulic components mounted within the width of side frame. Travel speed can be selected by switch panel. Hydraulically released disc parking brake is built each motor.

SH330(LC)-5/SH350HD(LHD)-5		
Travel speed	High	5.5 km/h
	Low	3.5 km/h
Drawbar Pull	265 kN/264 kN	

### Lubricant & Coolant capacity

SH330(LC)-5/SH350HD(LHD)-5	
Hydraulic system	350 liters
Hydraulic oil tank	175 liters
Fuel tank	580 liters
Cooling system	30 liters
Final drive case(per side)	9.5 liters
Swing drive case	7.9 liters
Engine crank case (with remote oil filter)	38 liters

## Auxiliary hydraulic system

SH330(LC)-5			
Auxiliary piping type (option)	For Breaker	For Double (breaker & crusher) acting	For D/A + Second option line STD
Arm type	STD	STD with Reinforcement plate	STD with Reinforcement plate
Bucket linkage type	HD	HD	HD
Auxiliary hydraulic pump flow	290 liters/min	580 liters/min	580 liters/min+63 liters/min

SH350HD(LHD)-5			
Auxiliary piping type (option)	For Breaker	For Double (breaker & crusher) acting	For D/A + Second option line STD
Arm type	HD with Reinforcement plate	HD with Reinforcement plate	HD with Reinforcement plate
Bucket linkage type	HD	HD	HD
Auxiliary hydraulic pump flow	290 liters/min	580 liters/min	580 liters/min+63 liters/min

## Bucket

Model	SH330(LC)-5					SH350HD(LHD)-5		
	Bucket capacity (ISO/SAE/PCSA heaped) unit:m <sup>3</sup>	1.15 m <sup>3</sup>	1.4 m <sup>3</sup>	1.4HD m <sup>3</sup>	1.6 m <sup>3</sup>	1.8 m <sup>3</sup>	1.4HD m <sup>3</sup>	1.6HD m <sup>3</sup>
Bucket capacity (CECE heaped) unit:m <sup>3</sup>	0.99 m <sup>3</sup>	1.21 m <sup>3</sup>	1.21 m <sup>3</sup>	1.36 m <sup>3</sup>	1.53 m <sup>3</sup>	1.21 m <sup>3</sup>	1.36 m <sup>3</sup>	
Bucket type	STD	STD	HD	STD	STD	HD	HD	
Number of teeth	4	5	5	5	5	5	5	
A Length	1 740 mm		1 730 mm	1 740 mm		1 730 mm		
B Length	1 740 mm		1 400 mm	1 740 mm		1 400 mm		
Width unit:mm	With side cutter	1 233 mm	1 435 mm	1 424 mm	1 575 mm	1 733 mm	1 424 mm	1 564 mm
	Without side cutter	1 100 mm	1 302 mm	1 310 mm	1 442 mm	1 600 mm	1 310 mm	1 450 mm
Weight unit:kg	2.63 m arm	1 045 kg	1 170 kg	1 500 kg	1 240 kg	1 320 kg	1 500 kg	1 575 kg
	3.25 m arm	⊙	⊙	⊙	●	○	⊙	●
Combination	4.04 m arm	●	○	○	N/A	N/A	—	—

⊙ Suitable for materials with density up to 2,000 kg/m<sup>3</sup> or less

○ Suitable for materials with density up to 1,600 kg/m<sup>3</sup> or less

● Standard bucket (Suitable for materials with density up to 1,800 kg/m<sup>3</sup> or less)

△ Suitable for materials with density up to 1,200 kg/m<sup>3</sup> or less

## Weight & Ground Pressure

Model	SH330(LC)-5		
	Shoe type	Shoe width	Operating weight
Triple grouser shoe	600 mm	33 400 kg (34 000 kg)	67 kPa (64 kPa)
	800 mm	34 100 kg (34 800 kg)	52 kPa (49 kPa)

Model	SH350HD(LHD)-5		
	Shoe type	Shoe width	Operating weight
Triple grouser shoe	600 mm	35 600 kg (36 100 kg)	72 kPa (67 kPa)
	800 mm	36 300 kg (36 900 kg)	55 kPa (52 kPa)

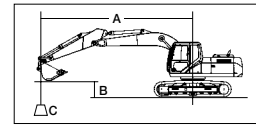
## Digging Force

Model	SH330(LC)-5/SH350HD(LHD)-5			
	Arm length	2.63 m	3.25 m	4.04 m
Bucket digging force <with auto power up>	ISO 6015	229 kN <248 kN>		
	SAE: PCSA	204 kN <221 kN>		
Arm digging force <with auto power up>	ISO	195 kN <211 kN>	164 kN <178 kN>	140 kN <152 kN>
	SAE: PCSA	189 kN <205 kN>	160 kN <173 kN>	137 kN <149 kN>

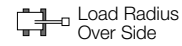
## Lifting Capacity

Notes: 1. Ratings are based on SAE J/ISO 10567

- Lifting capacity does not exceed 75% of tipping load with the machine on firm, level ground or 87% full hydraulic capacity.
- The load point is a hook (not standard equipment) located on the back of the bucket.
- \*Indicates load limited by hydraulic capacity.
- 0m = Ground.



A: Radius of load  
B: Bucket hook height  
C: Lifting capacity



Unit : kg

### SH330-5

SHOE : 600 (mm)G  
BUCKET : SAE/PCSA 1.15 (m<sup>3</sup>)  
ARM LENGTH = 4.04 (m)  
MAXIMUM REACH = 10.43 (m)  
BOOM : 6.45 (m)

Bucket Hook Height	Radius of Load																									
	Max. Radius		10 m		9 m		8 m		7 m		6 m		5 m		4 m		3 m		2 m		Min. Radius					
	Front	Side	Front	Side	Front	Side	Front	Side	Front	Side	Front	Side	Front	Side	Front	Side	Front	Side	Front	Side	Front	Side				
7 m	3 618*	9.15	3 618*	9.15			4 144*	4 144*															6 033*	8.11	5 667	8.11
6 m	3 508*	9.65	3 508*	9.65			5 494*	4 517	6 483*	5 708													6 493*	7.88	5 879	7.88
5 m	3 531*	10.00	3 531*	10.00	3 541*	3 532	6 379	4 418	6 830*	5 547													6 998*	7.38	6 432	7.38
4 m	3 604*	10.30	3 279	10.30	4 681*	3 458	6 239	4 285	7 289*	5 347	7 804*	6 778											8 142*	6.48	7 736	6.48
3 m	3 731*	10.40	3 105	10.40	5 025	3 363	6 078	4 135	7 458	5 125	8 577*	6 453	9 668*	8 334	11 322*	11 217							19 980*	2.94	19 980*	2.94
2 m	3 916*	10.40	2 999	10.40	4 918	3 262	5 914	3 980	7 217	4 900	9 002	6 126	10 825*	7 846	13 090*	10 444	16 971*	14 851	15 271*	15 271*			6 602*	2.38	6 602*	2.38
1 m	4 173*	10.40	2 953	10.40	4 817	3 166	5 758	3 834	6 992	4 690	8 677	5 827	11 125	7 413	14 582*	9 792	19 158*	13 819	11 174*	11 174*			4 918*	2.12	4 918*	2.12
0 m	4 522*	10.20	2 969	10.20	4 733	3 087	5 625	3 709	6 800	4 511	8 406	5 578	10 741	7 067	14 482	9 313	20 451*	13 172	11 520*	11 520*	6 697*	6 697*	6 303*	1.86	6 250*	1.44
-1 m	4 706	9.96	3 054	9.96			5 526	3 615	6 653	4 374	8 202	5 391	10 468	6 821	14 127	9 004	20 965*	12 822	13 242*	13 242*	9 127*	9 127*	8 779*	1.86	7 958*	1.41
-2 m	4 965	9.59	3 224	9.59			5 470	3 562	6 559	4 287	8 071	5 271	10 302	6 671	13 935	8 836	20 856*	12 674	15 674*	15 674*	11 698*	11 698*	11 344*	1.86	10 451*	1.41
-3 m	5 386	9.10	3 508	9.10			5 473	3 565	6 526	4 257	8 016	5 220	10 234	6 610	13 875	8 783	20 207*	12 670	18 686*	18 686*	14 492*	14 492*	14 102*	1.86	13 075*	1.41
-4 m	6 061	8.46	3 968	8.46					6 568	4 296	8 040	5 242	10 260	6 633	13 931	8 832	19 006*	12 784	22 370*	21 847	17 618*	17 618*	17 163*	1.86	15 933*	1.41
-5 m	7 189	7.63	4 735	7.63							8 161	5 353	10 387	6 748	13 933*	8 981	17 151*	13 015	21 822*	21 822*	21 232*	21 232*	20 674*	1.86	19 141*	1.41
-6 m	8 364*	6.54	6 160	6.54									9 527*	6 985	11 744*	9 253	14 401*	13 386	17 996*	17 996*	23 861*	23 861*	24 179*	1.96	24 179*	1.96

### SH330-5

SHOE : 600 (mm)G  
BUCKET : SAE/PCSA 1.4 (m<sup>3</sup>)  
ARM LENGTH = 3.25 (m)  
MAXIMUM REACH = 9.67 (m)  
BOOM : 6.45 (m)

Bucket Hook Height	Radius of Load																											
	Max. Radius		10 m		9 m		8 m		7 m		6 m		5 m		4 m		3 m		2 m		Min. Radius							
	Front	Side	Front	Side	Front	Side	Front	Side	Front	Side	Front	Side	Front	Side	Front	Side	Front	Side	Front	Side	Front	Side	Front	Side	Front	Side		
7 m	4 898*	8.24	4 898*	8.24					5 883*	5 632															7 282*	7.31	6 700	7.31
6 m	4 577*	8.83	4 574	8.83					7 383*	5 559															7 599*	7.03	7 056	7.03
5 m	4 627*	9.21	4 126	9.21			5 786*	4 328	7 674*	5 424	8 112*	6 885												8 473*	6.38	8 068	6.38	
4 m	4 750*	9.48	3 817	9.48			6 165	4 225	7 581	5 250	8 760*	6 615	9 742*	8 551	11 232*	11 232*								19 576*	2.22	19 576*	2.22	
3 m	4 949*	9.63	3 611	9.63			6 035	4 104	7 374	5 057	9 204	6 325	10 833*	8 103	12 960*	10 792	16 682*	15 346	13 770*	13 770*				9 276*	2.82	9 276*	2.82	
2 m	5 221	9.67	3 491	9.67			5 903	3 979	7 170	4 867	8 898	6 043	11 404	7 681	14 541*	10 128	19 190*	14 215	7 202*	7 202*				6 847*	2.98	6 847*	2.98	
1 m	5 190	9.62	3 450	9.62			5 782	3 866	6 986	4 696	8 630	5 797	11 012	7 327	14 807	9 617	20 358*	13 501	8 056*	8 056*				6 049*	2.77	6 049*	2.77	
0 m	5 269	9.45	3 489	9.45			5 688	3 777	6 839	4 559	8 420	5 604	10 722	7 066	14 423	9 282	19 964*	13 137	10 641*	10 641*				8 153*	2.26	8 153*	2.26	
-1 m	5 475	9.17	3 619	9.17			5 632	3 724	6 740	4 466	8 277	5 473	10 538	6 899	14 210	9 096	21 159*	12 990	13 781*	13 781*	10 042*	10 042*	9 776*	1.86	10 586*	1.67		
-2 m	5 848	8.77	3 867	8.77					6 697	4 426	8 207	5 408	10 451	6 821	14 131	9 027	20 524*	12 981	17 362*	17 362*	13 496*	13 496*	13 180*	1.86	12 458*	1.41		
-3 m	6 466	8.22	4 285	8.22					6 725	4 453	8 212	5 413	10 455	6 825	14 164	9 056	19 388*	13 077	21 510*	21 510*	17 117*	17 117*	16 727*	1.86	15 736*	1.41		
-4 m	7 503	7.50	4 988	7.50					8 308	5 501	10 554	6 914	14 303	9 177	17 672*	13 274	22 093*	22 093*	21 154*	21 154*	20 655*	20 655*		1.86	19 329*	1.41		
-5 m	9 037*	6.55	6 264	6.55							10 249*	7 113	12 506*	9 407	15 170*	13 590	18 632*	18 632*						23 640*	2.03	23 640*	2.03	
-6 m	8 689*	5.24	8 689*	5.24									9 239*	9 239*	11 421*	11 421*								12 254*	3.63	12 254*	3.63	

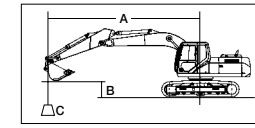
### SH330-5

SHOE : 600 (mm)G  
BUCKET : SAE/PCSA 1.6 (m<sup>3</sup>)  
ARM LENGTH = 2.63 (m)  
MAXIMUM REACH = 9.18 (m)  
BOOM : 6.45 (m)

Bucket Hook Height	Radius of Load																											
	Max. Radius		10 m		9 m		8 m		7 m		6 m		5 m		4 m		3 m		2 m		Min. Radius							
	Front	Side	Front	Side	Front	Side	Front	Side	Front	Side	Front	Side	Front	Side	Front	Side	Front	Side	Front	Side	Front	Side	Front	Side	Front	Side		
7 m	7 898*	7.51	6 164	7.51																					8 137*	6.96	7 670	6.96
6 m	6 627*	8.28	5 030	8.28					7 737	5 393	8 311*	6 918													8 614*	6.34	8 235	6.34
5 m	6 544	8.69	4 498	8.69					7 617	5 282	8 764*	6 705	9 572*	8 715											10 140*	5.48	10 135	5.48
4 m	6 083	8.97	4 140	8.97					7 446	5 123	9 335	6 442	10 520*	8 293	12 351*	11 098	15 551*	15 551*							20 698*	3.20	20 698*	3.20
3 m	5 794	9.13	3 908	9.13			5 946	4 018	7 256	4 946	9 031	6 164	11 522*	7 855	13 965*	10 372	18 412*	14 502							15 219*	3.63	15 219*	3.63
2 m	5 644	9.18	3 779	9.18			5 836	3 915	7 071	4 773	8 746	5 902	11 162	7 459	14 975	9 761	16 544*	13 534							11 387*	3.76	11 387*	3.76
1 m	5 622	9.12	3 743	9.12			5 741	3 826	6 911	4 625	8 508	5 683	10 817	7 149	14 490	9 337	15 381*	13 073							9 654*	3.60	9 654*	3.60
0 m	5 732	8.95	3 803	8.95					6 794	4 515	8 335	5 524	10 584	6 939	14 213	9 095	17 757*	12 909							9 009*	3.11	9 009*	3.11
-1 m	6 001	8.65	3 976	8.65					6 731	4 457	8 234	5 431	10 458	6 826	14 095	8 992	20 542*	12 892	13 410*	13 410*					12 086*	2.32	12 086*	2.32
-2 m	6 483	8.22	4 299	8.22					6 738	4 463	8 212	5 411	10 431	6 801	14 098	8 995	19 553*	12 973	18 588*	18 588*	14 611*	14 611*	14 321*	1.86	13 986*	1.65		
-3 m	7 299	7.64	4 850	7.64							8 278	5 471	10 499	6 862	14 208	9 090	18 083*	13 145	22 097*	22 097*	19 574*	19 574*	19 164*	1.86	18 697*	1.68		
-4 m	8 733	6.85	5 814	6.85									10 679	7 024	13 309*	9 286	15 974*	13 423	19 248*	19 248*				23 321*	2.05	23 321*	2.05	
-5 m	8 906*	5.80	7 723	5.80											10 707*	9 624	12 895*	12 895*	15 242*	15 242*					15 307*	2.97	15 307*	2.97
-6 m																												

Notes: 1. Ratings are based on SAE J/ISO 10567

- Lifting capacity does not exceed 75% of tipping load with the machine on firm, level ground or 87% full hydraulic capacity.
- The load point is a hook (not standard equipment) located on the back of the bucket.
- \*Indicates load limited by hydraulic capacity.
- 0m = Ground.



A: Radius of load  
B: Bucket hook height  
C: Lifting capacity



Unit : kg

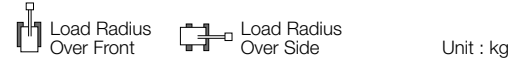
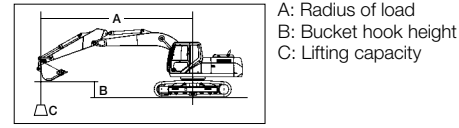
### SH330LC-5

SHOE : 600 (mm)G  
BUCKET : SAE/PCSA 1.15 (m<sup>3</sup>)  
ARM LENGTH = 4.04 (m)  
MAXIMUM REACH = 10.43 (m)  
BOOM : 6.45 (m)

Bucket Hook Height</
----------------------

## Lifting Capacity

- Notes: 1. Ratings are based on SAE J/ISO 10567  
 2. Lifting capacity does not exceed 75% of tipping load with the machine on firm, level ground or 87% full hydraulic capacity.  
 3. The load point is a hook (not standard equipment) located on the back of the bucket.  
 4. \*Indicates load limited by hydraulic capacity.  
 5. 0m = Ground.



**SH330-5** SHOE : 800 (mm)G BOCKET : SAE/PCSA 1.15 (m<sup>2</sup>) ARM LENGTH = 4.04 (m) BOOM : 6.45 (m) MAXIMUM REACH = 10.43 (m)

Bucket Hook Height	Radius of Load																							
	Max. Radius		10 m		9 m		8 m		7 m		6 m		5 m		4 m		3 m		2 m		Min. Radius			
	⌋	⌋	⌋	⌋	⌋	⌋	⌋	⌋	⌋	⌋	⌋	⌋	⌋	⌋	⌋	⌋	⌋	⌋	⌋	⌋	⌋	⌋		
7 m	3 618*	9.15	3 618*	9.15			4 144*	4 144*													6 033*	8.11	5 782	8.11
6 m	3 508*	9.65	3 508*	9.65			5 494*	4 618	6 483*	5 825											6 493*	7.88	5 998	7.88
5 m	3 531*	10.00	3 531*	10.00	3 541*	3 541*	6 476*	4 519	6 830*	5 663											6 998*	7.38	6 560	7.38
4 m	3 604*	10.30	3 666	10.30	4 681*	3 547	6 381	4 386	7 289*	5 463	7 804*	6 915									8 142*	6.48	7 888	6.48
3 m	3 731*	10.40	3 191	10.40	5 150	3 452	6 221	4 236	7 624	5 241	8 577*	6 590	9 668*	8 501	11 322*	11 322*					19 980*	2.94	19 980*	2.94
2 m	3 916*	10.40	3 084	10.40	5 043	3 351	6 056	4 081	7 382	5 016	9 200	6 264	10 825*	8 014	13 090*	10 658	16 971*	15 147	15 271*	15 271*	6 602*	2.38	6 602*	2.38
1 m	4 173*	10.40	3 039	10.40	4 942	3 255	5 901	3 935	7 157	4 807	8 875	5 965	11 370	7 580	14 582*	10 006	19 158*	14 115	11 174*	11 174*	4 918*	2.12	4 918*	2.12
0 m	4 522*	10.20	3 056	10.20	4 858	3 176	5 768	3 810	6 965	4 628	8 603	5 715	10 987	7 235	14 805	9 527	20 451*	13 468	11 520*	11 520*	6 697*	1.86	6 250*	1.44
-1 m	4 832	9.96	3 144	9.96			5 668	3 716	6 818	4 491	8 400	5 528	10 714	6 988	14 451	9 217	20 965*	13 119	13 242*	13 242*	9 127*	1.86	7 958*	1.41
-2 m	5 096	9.59	3 188	9.59			5 612	3 664	6 724	4 404	8 269	5 408	10 547	6 838	14 259	9 050	20 856*	12 971	15 674*	15 674*	9 127*	1.86	10 451*	1.41
-3 m	5 526	9.10	3 608	9.10			5 615	3 666	6 692	4 373	8 214	5 357	10 479	6 777	14 199	8 997	20 207*	12 967	18 686*	18 686*	14 492*	1.86	13 075*	1.41
-4 m	6 215	8.46	4 077	8.46					6 734	4 413	8 237	5 379	10 505	6 801	14 254	9 046	19 006*	13 081	22 370*	22 370*	17 618*	1.86	15 933*	1.41
-5 m	7 365	7.63	4 859	7.63							8 358	5 490	10 632	6 915	13 933*	9 195	17 151*	13 312	21 822*	21 822*	21 232*	1.86	19 141*	1.41
-6 m	8 364*	6.54	6 309	6.54									9 527*	7 152	11 744*	9 467	14 401*	13 682	17 996*	17 996*	23 861*	1.96	24 179*	1.96

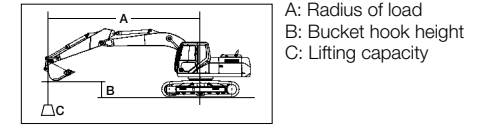
**SH330-5** SHOE : 800 (mm)G BOCKET : SAE/PCSA 1.4 (m<sup>2</sup>) ARM LENGTH = 3.25 (m) BOOM : 6.45 (m) MAXIMUM REACH = 9.67 (m)

Bucket Hook Height	Radius of Load																							
	Max. Radius		10 m		9 m		8 m		7 m		6 m		5 m		4 m		3 m		2 m		Min. Radius			
	⌋	⌋	⌋	⌋	⌋	⌋	⌋	⌋	⌋	⌋	⌋	⌋	⌋	⌋	⌋	⌋	⌋	⌋	⌋	⌋	⌋	⌋		
7 m	4 898*	8.24	4 898*	8.24			5 883*	5 749													7 282*	7.31	6 830	7.31
6 m	4 577*	8.83	4 577*	8.83			7 383*	5 676													7 599*	7.03	7 193	7.03
5 m	4 627*	9.21	4 224	9.21			5 786*	4 429	7 674*	5 540	8 112*	7 022									8 473*	6.38	8 223	6.38
4 m	4 750*	9.48	3 912	9.48	6 307	4 327	7 746	5 366	8 760*	6 753	9 742*	8 718	11 232*	11 232*							19 576*	2.22	19 576*	2.22
3 m	4 949*	9.63	3 705	9.63	6 178	4 205	7 540	5 174	9 402	6 462	10 833*	8 271	12 960*	11 006	16 682*	15 643	13 770*	13 770*			9 276*	2.82	9 276*	2.82
2 m	5 238*	9.67	3 584	9.67	6 045	4 080	7 335	4 984	9 096	6 181	11 650	7 848	14 541*	10 341	19 190*	14 511	7 202*	7 202*			6 847*	2.98	6 847*	2.98
1 m	5 321	9.62	3 544	9.62	5 925	3 967	7 152	4 813	8 827	5 934	11 257	7 494	15 130	9 831	20 358*	13 797	8 056*	8 056*			6 049*	2.77	6 049*	2.77
0 m	5 403	9.45	3 584	9.45	5 830	3 878	7 005	4 676	8 617	5 741	10 967	7 233	14 746	9 495	19 964*	13 433	10 641*	10 641*			8 153*	2.26	8 153*	2.26
-1 m	5 614	9.17	3 718	9.17	5 774	3 825	6 905	4 583	8 475	5 610	10 783	7 067	14 533	9 309	21 159*	13 287	13 781*	13 781*	10 042*	10 042*	9 776*	1.86	10 586*	1.67
-2 m	5 995	8.77	3 971	8.77			6 862	4 543	8 404	5 545	10 696	6 989	14 455	9 241	20 524*	13 277	17 362*	17 362*	13 496*	13 496*	13 180*	1.86	12 458*	1.41
-3 m	6 626	8.22	4 398	8.22			6 891	4 570	8 409	5 550	10 700	6 992	14 488	9 270	19 388*	13 373	21 510*	21 510*	17 117*	17 117*	16 727*	1.86	15 736*	1.41
-4 m	7 684	7.50	5 114	7.50					8 506	5 639	10 799	7 081	14 476*	9 391	17 672*	13 570	22 093*	22 093*	21 154*	21 154*	20 655*	1.86	19 329*	1.41
-5 m	9 037*	6.55	6 413	6.55							10 249*	7 280	12 506*	9 621	15 170*	13 886	18 632*	18 632*			23 640*	2.03	23 640*	2.03
-6 m	8 689*	5.24	8 689*	5.24									9 239*	9 239*	11 421*	11 421*					12 254*	3.63	12 254*	3.63

**SH330-5** SHOE : 800 (mm)G BOCKET : SAE/PCSA 1.6 (m<sup>2</sup>) ARM LENGTH = 2.63 (m) BOOM : 6.45 (m) MAXIMUM REACH = 9.18 (m)

Bucket Hook Height	Radius of Load																							
	Max. Radius		10 m		9 m		8 m		7 m		6 m		5 m		4 m		3 m		2 m		Min. Radius			
	⌋	⌋	⌋	⌋	⌋	⌋	⌋	⌋	⌋	⌋	⌋	⌋	⌋	⌋	⌋	⌋	⌋	⌋	⌋	⌋	⌋	⌋		
7 m	7 898*	7.51	6 290	7.51					8 079*	7 188											8 137*	6.96	7 816	6.96
6 m	6 627*	8.28	5 142	8.28			7 903	5 510	8 311*	7 056											8 614*	6.34	8 390	6.34
5 m	6 693	8.69	4 604	8.69			7 782	5 398	8 764*	6 842	9 572*	8 882									10 140*	5.48	10 140*	5.48
4 m	6 226	8.97	4 242	8.97			7 612	5 239	9 353*	6 580	10 520*	8 460	12 351*	11 312	15 551*	15 551*					20 698*	3.20	20 698*	3.20
3 m	5 933	9.13	4 008	9.13	6 088	4 119	7 422	5 062	9 229	6 301	11 522*	8 022	13 965*	10 586	18 412*	14 798					15 219*	3.63	15 219*	3.63
2 m	5 783	9.18	3 878	9.18	5 978	4 016	7 236	4 890	8 944	6 039	11 407	7 627	15 298	9 975	16 544*	13 831					11 387*	3.76	11 387*	3.76
1 m	5 762	9.12	3 843	9.12	5 884	3 927	7 077	4 741	8 705	5 820	11 062	7 316	14 814	9 551	15 381*	13 370					9 654*	3.60	9 654*	3.60
0 m	5 876	8.95	3 905	8.95			6 959	4 632	8 532	5 661	10 829	7 106	14 537	9 309	17 757*	13 206					9 009*	3.11	9 009*	3.11
-1 m	6 150	8.65	4 082	8.65			6 896	4 573	8 432	5 569	10 704	6 993	14 418	9 206	20 542*	13 189	13 410*	13 410*			12 086*	2.32	12 086*	2.32
-2 m	6 643	8.22	4 412	8.22			6 903	4 580	8 409	5 548	10 676	6 968	14 422	9 209	19 553*	13 270	18 588*	18 588*	14 611*	14 611*	14 321*	1.86	13 986*	1.65
-3 m	7 475	7.64	4 974	7.64					8 475	5 609	10 744	7 029	14 531	9 304	18 083*	13 442	22 097*	22 097*	19 574*	19 574*	19 164*	1.86	18 697*	1.68
-4 m	8 937	6.85	5 955	6.85							10 924	7 192	13 309*	9 500	15 974*	13 720	19 248*	19 248*			23 321*	2.05	23 321*	2.05
-5 m	8 906*	5.80	7 898	5.80									10 707*	9 838	12 895*	12 895*	15 242*	15 242*			15 307*	2.97	15 307*	2.97
-6 m																								

- Notes: 1. Ratings are based on SAE J/ISO 10567  
 2. Lifting capacity does not exceed 75% of tipping load with the machine on firm, level ground or 87% full hydraulic capacity.  
 3. The load point is a hook (not standard equipment) located on the back of the bucket.  
 4. \*Indicates load limited by hydraulic capacity.  
 5. 0m = Ground.



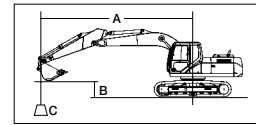
**SH330LC-5** SHOE : 800 (mm)G BOCKET : SAE/PCSA 1.15 (m<sup>2</sup>) ARM LENGTH = 4.04 (m) BOOM : 6.45 (m) MAXIMUM REACH = 10.43 (m)

Bucket Hook Height	Radius of Load																							
	Max. Radius		10 m		9 m		8 m		7 m		6 m		5 m		4 m		3 m		2 m		Min. Radius			
	⌋	⌋	⌋	⌋	⌋	⌋	⌋	⌋	⌋	⌋	⌋	⌋	⌋	⌋	⌋	⌋	⌋	⌋	⌋	⌋	⌋	⌋		
7 m	3 618*	9.15	3 618*	9.15			4 144*	4 144*													6 033*	8.11	5 894	8.11
6 m	3 508*	9.65	3 508*	9.65			5 494*	4 717	6 483*	5 938											6 493*	7.88	6 114	7.88
5 m	3 531*	10.00	3 531*	10.00	3 541*	3 541*	6 476*	4 617	6 830*	5 777											6 998*	7.38	6 686	7.38
4 m	3 604*	10.30	3 666	10.30	4 681*	3 547	6 381	4 386	7 289*	5 463	7 804*	6 915									8 142*	6.48	8 035	6.48
3 m	3 731*	10.40	3 191																					

## Lifting Capacity

Notes: 1. Ratings are based on SAE J/ISO 10567

- Lifting capacity does not exceed 75% of tipping load with the machine on firm, level ground or 87% full hydraulic capacity.
- The load point is a hook (not standard equipment) located on the back of the bucket.
- \*Indicates load limited by hydraulic capacity.
- 0m = Ground.



A: Radius of load  
B: Bucket hook height  
C: Lifting capacity



Unit : kg

### SH350HD-5

SHOE : 600 (mm)G  
BUCKET : SAE/PCSA 1.4 (m<sup>3</sup>)  
ARM LENGTH = 3.25 (m)  
MAXIMUM REACH = 9.67 (m)  
BOOM : 6.45 (m)

Bucket Hook Height	Radius of Load																									
	Max. Radius		10 m		9 m		8 m		7 m		6 m		5 m		4 m		3 m		2 m		Min. Radius					
	Icon 1	Icon 2	Icon 1	Icon 2	Icon 1	Icon 2	Icon 1	Icon 2	Icon 1	Icon 2	Icon 1	Icon 2	Icon 1	Icon 2	Icon 1	Icon 2	Icon 1	Icon 2	Icon 1	Icon 2	Icon 1	Icon 2				
7 m	4 573*	8.24	4 573*	8.24				5 558*	5 558*												6 836*	7.31	6 836*	7.31		
6 m	4 252*	8.83	4 252*	8.83				6 916*	5 748												7 148*	7.03	7 148*	7.03		
5 m	4 302*	9.21	4 199	9.21				5 462*	4 418	7 196*	5 601	7 643*	7 178								8 010*	6.38	8 010*	6.38		
4 m	4 426*	9.48	3 866	9.48				6 350	4 307	7 588*	5 411	8 266*	6 883	9 247*	8 967	10 730*	10 730*				19 239*	2.22	19 239*	2.22		
3 m	4 626*	9.63	3 643	9.63				6 208	4 174	7 642	5 201	8 955*	6 564	10 297*	8 475	12 394*	11 360	16 051*	16 051*	13 438*	13 438*	8 946*	2.82	8 946*	2.82	
2 m	4 915*	9.67	3 513	9.67				6 063	4 038	7 418	4 992	9 263	6 254	11 298*	8 009	13 915*	10 626	18 465*	14 986	6 875*	6 875*	6 520*	2.98	6 520*	2.98	
1 m	5 299	9.62	3 468	9.62				5 931	3 914	7 217	4 805	8 968	5 983	11 505	7 619	15 060*	10 062	19 917*	14 195	7 729*	7 729*	5 724*	2.77	5 724*	2.77	
0 m	5 382	9.45	3 508	9.45				5 828	3 817	7 055	4 654	8 737	5 771	11 185	7 331	15 115	9 692	19 633*	13 793	10 314*	10 314*	7 824*	2.26	7 824*	2.26	
-1 m	5 601	9.17	3 647	9.17				5 767	3 759	6 946	4 553	8 581	5 627	10 982	7 148	14 880	9 487	20 334*	13 632	13 453*	13 453*	9 717*	1.86	10 258*	1.67	
-2 m	5 997	8.77	3 912	8.77				6 899	4 509	8 504	5 556	10 887	7 062	14 795	9 412	19 700*	13 625	17 034*	17 034*	13 169*	13 169*	12 854*	1.86	12 132*	1.41	
-3 m	6 656	8.22	4 360	8.22				6 931	4 539	8 510	5 562	10 893	7 068	14 834	9 446	18 575*	13 734	21 181*	21 181*	16 790*	16 790*	16 400*	1.86	15 409*	1.41	
-4 m	7 763	7.50	5 114	7.50						8 617	5 660	11 004	7 167	13 770*	9 582	16 877*	13 955	21 160*	21 160*	20 825*	20 825*	20 327*	1.86	19 001*	1.41	
-5 m	8 442*	6.55	6 482	6.55								9 625*	7 388	11 823*	9 838	14 405*	14 308	17 739*	17 739*			22 516*	2.03	22 516*	2.03	
-6 m	8 059*	5.24	8 059*	5.24																			11 495*	3.63	11 495*	3.63

### SH350HD-5

SHOE : 600 (mm)G  
BUCKET : SAE/PCSA 1.6 (m<sup>3</sup>)  
ARM LENGTH = 2.63 (m)  
MAXIMUM REACH = 9.18 (m)  
BOOM : 6.45 (m)

Bucket Hook Height	Radius of Load																									
	Max. Radius		10 m		9 m		8 m		7 m		6 m		5 m		4 m		3 m		2 m		Min. Radius					
	Icon 1	Icon 2	Icon 1	Icon 2	Icon 1	Icon 2	Icon 1	Icon 2	Icon 1	Icon 2	Icon 1	Icon 2	Icon 1	Icon 2	Icon 1	Icon 2	Icon 1	Icon 2	Icon 1	Icon 2	Icon 1	Icon 2				
7 m	7 587*	7.51	6 417	7.51						7 647*	7 373											7 711*	6.69	7 711*	6.69	
6 m	6 315*	8.28	5 196	8.28				7 568*	5 588	7 870*	7 231											8 181*	6.34	8 181*	6.34	
5 m	6 382*	8.69	4 623	8.69				7 768*	5 467	8 305*	7 000	9 117*	9 117*									9 686*	5.48	9 686*	5.48	
4 m	6 281	8.97	4 237	8.97				7 742	5 295	8 874*	6 715	10 032*	8 705	11 844*	11 721	15 003*	15 003*					20 063*	3.20	20 063*	3.20	
3 m	5 970	9.13	3 987	9.13				6 133	4 105	7 536	5 103	9 434	6 412	11 000*	8 229	13 404*	10 931	17 769*	15 356			14 916*	3.63	14 916*	3.63	
2 m	5 809	9.18	3 847	9.18				6 014	3 993	7 335	4 916	9 124	6 127	11 702	7 799	14 717*	10 265	16 240*	14 300			11 080*	3.76	11 080*	3.76	
1 m	5 784	9.12	3 808	9.12				5 912	3 897	7 161	4 754	8 865	5 889	11 327	7 460	15 240	9 803	15 075*	13 796			9 345*	3.60	9 345*	3.60	
0 m	5 901	8.95	3 872	8.95				7 034	4 635	8 676	5 716	11 073	7 232	14 937	9 539	17 450*	13 617					8 698*	3.11	8 698*	3.11	
-1 m	6 187	8.65	4 057	8.65				6 965	4 572	8 567	5 616	10 936	7 108	14 808	9 426	19 784*	13 599	13 100*	13 100*			11 769*	2.32	11 769*	2.32	
-2 m	6 701	8.22	4 402	8.22				6 972	4 578	8 542	5 593	10 906	7 081	14 812	9 430	18 801*	13 688	18 279*	18 279*	14 300*	14 300*	14 009*	1.86	13 674*	1.65	
-3 m	7 572	7.64	4 994	7.64						8 614	5 659	10 980	7 148	14 271*	9 534	17 344*	13 877	21 237*	21 237*	19 265*	19 265*	18 854*	1.86	18 387*	1.68	
-4 m	8 646*	6.85	6 029	6.85						10 457*	7 325	12 665*	9 748	15 255*	14 180	18 416*	18 416*					22 293*	2.05	22 293*	2.05	
-5 m	8 332*	5.80	8 079	5.80												10 088*	10 088*	12 206*	12 206*	14 448*	14 448*		14 509*	2.97	14 509*	2.97
-6 m																										

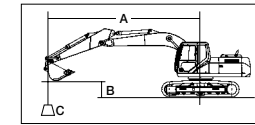
### SH350LHD-5

SHOE : 600 (mm)G  
BUCKET : SAE/PCSA 1.4 (m<sup>3</sup>)  
ARM LENGTH = 3.25 (m)  
MAXIMUM REACH = 9.67 (m)  
BOOM : 6.45 (m)

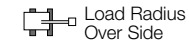
Bucket Hook Height	Radius of Load																									
	Max. Radius		10 m		9 m		8 m		7 m		6 m		5 m		4 m		3 m		2 m		Min. Radius					
	Icon 1	Icon 2	Icon 1	Icon 2	Icon 1	Icon 2	Icon 1	Icon 2	Icon 1	Icon 2	Icon 1	Icon 2	Icon 1	Icon 2	Icon 1	Icon 2	Icon 1	Icon 2	Icon 1	Icon 2	Icon 1	Icon 2				
7 m	4 573*	8.24	4 573*	8.24				5 558*	5 558*													6 836*	7.31	6 836*	7.31	
6 m	4 252*	8.83	4 252*	8.83				6 916*	5 834													7 148*	7.03	7 148*	7.03	
5 m	4 302*	9.21	4 272	9.21				5 462*	4 492	7 196*	5 687	7 643*	7 279									8 010*	6.38	8 010*	6.38	
4 m	4 426*	9.48	3 935	9.48				7 008*	4 381	7 588*	5 497	8 266*	6 984	9 247*	9 090	10 730*	10 730*					19 239*	2.22	19 239*	2.22	
3 m	4 626*	9.63	3 712	9.63				7 072	4 248	8 037*	5 287	8 955*	6 665	10 297*	8 598	12 394*	11 517	16 051*	16 051*	13 438*	13 438*	8 946*	2.82	8 946*	2.82	
2 m	4 915*	9.67	3 581	9.67				6 923	4 112	8 458	5 078	9 627*	6 355	11 298*	8 132	13 915*	10 783	18 465*	15 204	6 875*	6 875*	6 520*	2.98	6 520*	2.98	
1 m	5 316*	9.62	3 536	9.62				6 789	3 988	8 252	4 890	10 204*	6 084	12 120*	7 724	15 060*	10 219	19 917*	14 412	7 729*	7 729*	5 724*	2.77	5 724*	2.77	
0 m	5 871*	9.45	3 578	9.45				6 683	3 891	8 086	4 740	10 029	5 872	12 678*	7 454	15 726*	9 849	19 633*	14 010	10 314*	10 314*	7 824*	2.26	7 824*	2.26	
-1 m	6 430	9.17	3 719	9.17				6 620	3 833	7 973	4 638	9 867	5 728	12 688	7 271	15 923*	9 644	20 334*	13 850	13 453*	13 453*	9 762*	2.02	10 258*	1.67	
-2 m	6 885	8.77	3 988	8.77						7 926	4 595	9 788	5 657	12 590	7 185	15 680*	9 569	19 700*	13 842	17 034*	17 034*	13 221*	2.02	12 132*	1.41	
-3 m	7 639	8.22	4 443	8.22						7 958	4 624	9 794	5 663	12 345*	7 191	14 988*	9 603	18 575*	13 951	21 181*	21 181*	16 853*	2.02	15 409*	1.41	
-4 m	8 401*	7.50	5 206	7.50								9 368*	5 761	11 367*	7 290	13 770*	9 739	16 877*	14 173	21 160*	21 160*	20 905*	2.02	19 001*	1.41	
-5 m	8 442*	6.55	6 592	6.55										9 625*	7 511	11 823*	9 955	14 405*	14 405*	17 739*	17 739*	22 516*	2.03	22 516*	2.03	
-6 m	8 059*	5.24	8 059*	5.24																			11 495*	3.63	11 495*	3.63

Notes: 1. Ratings are based on SAE J/ISO 10567

- Lifting capacity does not exceed 75% of tipping load with the machine on firm, level ground or 87% full hydraulic capacity.
- The load point is a hook (not standard equipment) located on the back of the bucket.
- \*Indicates load limited by hydraulic capacity.
- 0m = Ground.



A: Radius of load  
B: Bucket hook height  
C: Lifting capacity



Unit : kg

### SH350HD-5

SHOE : 800 (mm)G  
BUCKET : SAE/PCSA 1.4 (m<sup>3</sup>)  
ARM LENGTH = 3.25 (m)  
MAXIMUM REACH = 9.67 (m)  
BOOM : 6.45 (m)

Bucket Hook Height	Radius of Load																								
	Max. Radius		10 m		9 m		8 m		7 m		6 m		5 m		4 m		3 m		2 m		Min. Radius				
	Icon 1	Icon 2	Icon 1	Icon 2	Icon 1	Icon 2	Icon 1	Icon 2	Icon 1	Icon 2	Icon 1	Icon 2	Icon 1	Icon 2	Icon 1	Icon 2	Icon 1	Icon 2	Icon 1	Icon 2	Icon 1	Icon 2			
7 m	4 573*	8.24	4 573*	8.24				5 558*	5 558*													6 836*	7.31	6 836*	7.31
6 m	4 252*	8.83	4 252*	8.83																					