

Specifications

SH160-5 Technical Data

Engine

Two variable displacement axial piston pumps, one gear pump for pilot controls and electronic-controlled engine of SPACE5 and SIH:S with New Hydraulic System Includes:three working modes(SP,H,A) one-touch/automatic idling system, automatic power-boost, speed assistance system, power-swing system.

SH160-5	
Model	ISUZU AI-4JJ1X
Type	Water-cooled,4-cycle,overhead camshaft, 4-cylinder in line,direct injection (electric control), turbo-charged diesel engine.
Rated output	89.2 kW (121 PS)/2,200 min ⁻¹
Maximum torque	391 N·m at 1,800 min ⁻¹
Piston displacement	2,999 cc
Bore and stroke	95.4 mm x 104.9 mm
Starting system	24 V electric motor starting
Alternator	24 V,50 A
Fuel tank	300-liters
Air filter	Double element

Hydraulic pumps

Two variable displacement axial piston pumps provide power for attachment, swing and travel.

SH160-5	
Maximum oil flow	2 x 142 liters/min
Pilot pump max.oil flow	22 liters/min

Hydraulic motors

For travel:Two variable displacement axial piston motors.
For swing:One fixed displacement axial piston motor.

Relief valve settings

Boom raising/arm/bucket 38.2 Mpa(390 kgf/cm²)<Holding pressure>
Boom raising/arm/bucket 34.3 Mpa(350 kgf/cm²)<Working pressure>
Boom lowering 32.3 Mpa(330 kgf/cm²)<Working & Holding pressure>
Boom raising/arm/bucket 36.3 Mpa(370 kgf/cm²)with Power-up<Working pressure>
Swing circuit 27.9 Mpa(284 kgf/cm²)
Travel circuit 34.3 Mpa(350 kgf/cm²)

Control valve

One 4-spool valve and one 5-spool valve with auxiliary spool.

Oil filtration

Return filter 6 microns
Pilot filter 8 microns
Suction filter 105 microns

Hydraulic cylinders

Cylinder	Q'ty	Bore x Rod Diameter x Stroke
Boom	2	115 mm x 80 mm x 1179 mm
Arm	1	125 mm x 90 mm x 1280 mm
Bucket	1	105 mm x 75 mm x 985 mm

Double-acting, bolt-up type cylinder tube-end;hardened steel bushings
Installed in cylinder tube and rods ends.

Cab & Controls

Cab mounted on 4 fluid mountings. Features include safety glass front, rear and side windows, reclining/sliding cloth upholstered suspension seat with headrest and armrest, cigarette lighter,pop-up skylight window,and intermittent wiper with washer. Front window slides upward for storage and the lower front window is removable. Control levers are located in 4 positions tilting control consoles. Reliable soft-touch switches. Easy-to-read Full-dot LCD monitor keeps operation in touch with critical machine functions.

Swing

Planetary reduction powered by axial piston motor,internal ring gear with Grease cavity for pinion. Swing bearing is single-row shear type ball Bearing. Dual stage relief valves for smooth swing Deceleration and stops. Mechanical disc swing brake.

SH160-5	
Swing speed	0~11.5 rpm
Tail swing radius	2,450 mm
Swing torque	45.1 kN·m(4,600 kgf·m)

Undercarriage

X-style carbody is integrally welded for strength and durability. Grease Cylinder track adjusters with shock absorbing springs. Undercarriage with Lubricated rollers and idlers.

Type of shoe:sealed link shoe

Upper rollers -

Heat treated, mounted on steel bushings with fluorine resin, sealed for lifetime lubrication.

Lower rollers -

Heat treated, mounted on steel bushings with leaded tin bronze casting, sealed for lifetime lubrication.

Track adjustment -

idler axles adjusted with grease cylinder integral with each side frame;adjustment yoke mechanism fitted with heavy duty recoil spring.

Number of rollers and shoes on each side

SH160-5	
Upper rollers	2
Lower rollers	7
Track shoes	44

Travel System

Two-speed independent hydrostatic system with compact axial motors for Increased performance. Hydraulic motor powered output shaft coupled to a planetary reduction unit and track sprocket. All hydraulic components mounted within the width of side frame.
Travel speed can be selected by switch panel.
Hydraulically released disc parking brake is built each motor.

SH160-5	
Travel speed	High 5.4 km/h Low 2.8 km/h
Maximum traction force	171 kN(17,400 kgf)

Lubricant & Coolant Capacity

SH160-5	
Hydraulic system	165 liters
Hydraulic oil tank	90 liters
Fuel tank	300 liters
Cooling system	15 liters
Final drive case(per side)	4.5 liters
Swing drive case	5.0 liters
Engine crank case (with remote oil filter)	17 liters

Auxiliary hydraulic system

SH160-5			
Auxiliary piping type (option)	For Breaker	For Double (breaker & crusher) acting	For D/A + Second option line
Arm type	STD	HD	HD
Bucket linkage type	HD	HD	HD
Auxiliary hydraulic pump flow	142 liter/min	284 liter/min	284+62 liter/min

Bucket

Model	SH160-5		
Bucket capacity (ISO/SAE/PCSA heaped)	0.55 m ³	0.62 m ³	0.70 m ³
Bucket capacity (CECE heaped)	0.47 m ³	0.54 m ³	0.60 m ³
Bucket type	STD	STD	STD
Number of teeth	5	5	5
Width	With side cutter 900 mm Without side cutter 830 mm	1 020 mm 940 mm	1 090 mm 1 020 mm
Weight	470 kg	502 kg	523 kg
Combination	2.23 m arm ● 2.62 m arm ● 3.05 m arm ◎	● ◎ ○	◎ ○ △

◎ Standard bucket (Suitable for materials with density up to 1,800 kg/m³ or less)
● Suitable for materials with density up to 2,000kg/m³ or less

○ Suitable for materials with density up to 1,600 kg/m³ or less
△ Suitable for materials with density up to 1,400kg/m³ or less

Weight & Ground Pressure

Model	SH160-5			
Shoe type	Shoe width	Overall width	Operating weight	Ground pressure
Triple grouser shoe	500 mm	2 490 mm	16 600 kg	47 kPa
	600 mm	2 590 mm	16 900 kg	40 kPa
	700 mm	2 690 mm	17 300 kg	35 kPa

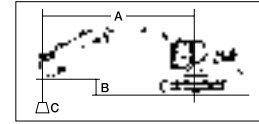
Digging Force

Model	SH160-5			
Arm length		2.23 m	2.62 m	3.05 m
Bucket digging force	ISO 6015	112 kN (118 kN)	112 kN (118 kN)	112 kN (118 kN)
	SAE: PCSA	101 kN (108 kN)	101 kN (108 kN)	101 kN (108 kN)
Arm digging force	ISO 6015	90 kN (95 kN)	79 kN (84 kN)	72 kN (77 kN)
	SAE: PCSA	87 kN (93 kN)	77 kN (83 kN)	71 kN (76 kN)

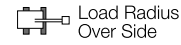
Lifting Capacity

Notes: 1. Ratings are based on SAE J/ISO 10567

- Lifting capacity does not exceed 75% of tipping load with the machine on firm, level ground or 87% full hydraulic capacity.
- The load point is a hook (not standard equipment) located on the back of the bucket.
- *Indicates load limited by hydraulic capacity.
- 0m = Ground.



A: Radius of load
B: Bucket hook height
C: Lifting capacity



Unit : kg

SH160-5

SHOE : 500 (mm)G
BUCKET : SAE/PCSA 0.55 (m³)
ARM LENGTH = 3.05 (m)
MAXIMUM REACH = 8.08 (m)
BOOM : 5.15 (m)

Bucket Hook Height	Radius of Load																			
	Max. Radius		8 m		7 m		6 m		5 m		4 m		3 m		2 m		Min. Radius			
	Front	Side	Front	Side	Front	Side	Front	Side	Front	Side	Front	Side	Front	Side	Front	Side	Front	Side		
7 m	2 292*	5.88	2 292*	5.88													2 635*	5.63	2 635*	5.63
6 m	1 814*	6.84	1 814*	6.84			3 059*	3 053									3 301*	5.66	3 301*	5.66
5 m	1 789*	7.38	1 789*	7.38			2 600*	2 252	3 635*	2 996							3 701*	5.38	3 629	5.38
4 m	1 809*	7.75	1 803	7.75			3 334*	2 198	4 102*	2 897	4 270*	3 945					4 341*	4.68	4 341*	4.68
3 m	1 873*	7.98	1 660	7.98			3 500	2 123	4 536	2 771	5 070*	3 737	5 892*	5 344	7 500*	7 500*	11 764*	11 764*	13 319*	1.73
2 m	1 983*	8.08	1 576	8.08	2 253*	1 604	3 408	2 038	4 384	2 635	5 910	3 515	7 395*	4 949	10 424*	7 725	4 414*	2.15	4 414*	2.15
1 m	2 151*	8.05	1 542	8.05	2 336*	1 557	3 319	1 958	4 243	2 509	5 680	3 315	8 243	4 617	9 580*	7 135	3 714*	2.04	3 714*	2.04
0 m	2 399*	7.89	1 557	7.89			3 246	1 891	4 128	2 406	5 504	3 162	7 973	4 395	8 777*	6 848	4 393*	4 393*	4 877*	1.98
-1 m	2 775*	7.59	1 630	7.59			3 198	1 847	4 050	2 336	5 392	3 065	7 827	4 275	9 794*	6 740	6 042*	6 042*	5 962*	1.72
-2 m	3 091	7.15	1 781	7.15			3 185	1 835	4 015	2 304	5 341	3 021	7 774	4 232	11 699*	6 732	7 895*	7 895*	7 082*	1.59
-3 m	3 569	6.51	2 062	6.51					4 028	2 316	5 349	3 028	7 799	4 252	12 797*	6 796	10 052*	10 052*	9 074*	1.59
-4 m	4 518	5.63	2 612	5.63						5 426	3 094	3 094	7 901	4 336	11 472*	6 936	12 709*	12 709*	11 417*	1.59
-5 m	6 365*	4.34	3 989	4.34									7 022*	4 513	9 232*	7 182	12 681*	12 681*	13 219*	1.89

SH160-5

SHOE : 500 (mm)G
BUCKET : SAE/PCSA 0.62 (m³)
ARM LENGTH = 2.62 (m)
MAXIMUM REACH = 7.76 (m)
BOOM : 5.15 (m)

Bucket Hook Height	Radius of Load																			
	Max. Radius		7 m		6 m		5 m		4 m		3 m		2 m		Min. Radius					
	Front	Side	Front	Side	Front	Side	Front	Side	Front	Side	Front	Side	Front	Side	Front	Side				
6 m	1 974*	6.46	1 974*	6.46			3 028*	2 991									3 851*	5.23	3 820	5.23
5 m	1 938*	7.03	1 938*	7.03	2 033*	2 033*	3 952*	2 946	4 157*	4 036							4 160*	4.91	4 160*	4.91
4 m	1 957*	7.42	1 940	7.42	3 229*	2 169	4 472*	2 855	4 753*	3 876							5 214*	4.02	5 214*	4.02
3 m	2 024*	7.65	1 783	7.65	3 476	2 103	4 495	2 738	5 534*	3 675	6 604*	5 219	8 828*	8 261			6 699*	2.11	6 699*	2.11
2 m	2 144*	7.76	1 694	7.76	3 394	2 029	4 356	2 613	5 851	3 468	8 041*	4 848	10 920*	7 469			3 846*	2.46	3 846*	2.46
1 m	2 329*	7.72	1 663	7.72	3 318	1 960	4 230	2 500	5 646	3 289	8 165	4 559	7 485*	7 013			4 216*	2.43	4 216*	2.43
0 m	2 608*	7.56	1 688	7.56	3 259	1 905	4 133	2 413	5 497	3 160	7 952	4 383	8 023*	6 840			5 518*	2.33	5 518*	2.33
-1 m	3 037*	7.25	1 781	7.25	3 227	1 876	4 073	2 359	5 412	3 086	7 851	4 301	9 764*	6 798			6 741*	2.02	6 741*	2.02
-2 m	3 387	6.78	1 970	6.78			4 057	2 345	5 386	3 064	7 835	4 287	12 294*	6 830	8 425*	8 425*	7 632*	1.59	7 879*	1.46
-3 m	3 993	6.11	2 325	6.11			4 099	2 383	5 420	3 093	7 892	4 334	12 279*	6 926	11 030*	11 030*	9 999*	1.59	9 131*	1.08
-4 m	5 282	5.16	3 061	5.16					5 538	3 195	8 031	4 449	10 652*	7 100	14 308*	14 308*	12 832*	1.59	12 137*	1.34
-5 m	6 371*	3.70	5 273	3.70													7 519*	3.14	6 847	3.14

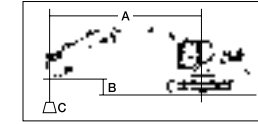
SH160-5

SHOE : 500 (mm)G
BUCKET : SAE/PCSA 0.70 (m³)
ARM LENGTH = 2.23 (m)
MAXIMUM REACH = 7.38 (m)
BOOM : 5.15 (m)

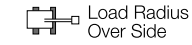
Bucket Hook Height	Radius of Load																			
	Max. Radius		7 m		6 m		5 m		4 m		3 m		2 m		Min. Radius					
	Front	Side	Front	Side	Front	Side	Front	Side	Front	Side	Front	Side	Front	Side	Front	Side				
6 m	2 620*	6.00	2 620*	6.00					4 289*	4 071							4 273*	4.85	4 273*	4.85
5 m	2 584*	6.61	2 432	6.61			4 319*	2 906	4 590*	3 978							4 680*	4.46	4 680*	4.46
4 m	2 624*	7.02	2 132	7.02	2 725*	2 145	4 589	2 824	5 172*	3 821	5 839*	5 479					6 766*	3.21	6 766*	3.21
3 m	2 732*	7.27	1 951	7.27	3 459	2 091	4 466	2 714	5 929*	3 626	7 212*	5 112	10 050*	7 966			7 523*	2.56	7 523*	2.56
2 m	2 916*	7.38	1 851	7.38	3 388	2 026	4 337	2 598	5 804	3 430	8 404	4 760	7 025*	7 025*			4 986*	2.85	4 986*	2.85
1 m	3 081	7.35	1 819	7.35	3 323	1 966	4 223	2 497	5 619	3 269	8 099	4 509	6 139*	6 139*			5 030*	2.78	5 030*	2.78
0 m	3 159	7.17	1 854	7.17	3 276	1 923	4 140	2 422	5 493	3 160	7 933	4 372	7 788*	6 844			6 540*	2.64	6 540*	2.64
-1 m	3 369	6.85	1 972	6.85			4 097	2 384	5 431	3 106	7 872	4 322	10 325*	6 850			7 968*	2.29	7 968*	2.29
-2 m	3 781	6.34	2 211	6.34			4 102	2 388	5 428	3 103	7 887	4 334	12 851*	6 910	9 483*	9 483*	9 308*	1.68	9 308*	1.68
-3 m	4 593	5.62	2 680	5.62					5 490	3 157	7 973	4 405	11 672*	7 033	12 734*	12 734*	11 584*	1.59	10 800*	1.19
-4 m	6 493*	4.56	3 755	4.56									7 566*	4 557	9 739*	7 244	12 931*	12 931*	13 484*	1.87

Notes: 1. Ratings are based on SAE J/ISO 10567

- Lifting capacity does not exceed 75% of tipping load with the machine on firm, level ground or 87% full hydraulic capacity.
- The load point is a hook (not standard equipment) located on the back of the bucket.
- *Indicates load limited by hydraulic capacity.
- 0m = Ground.



A: Radius of load
B: Bucket hook height
C: Lifting capacity



Unit : kg

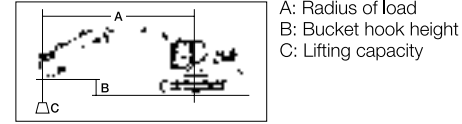
SH160-5

SHOE : 600 (mm)G
BUCKET : SAE/PCSA 0.55 (m³)
ARM LENGTH = 3.05 (m)
MAXIMUM REACH = 8.08 (m)
BOOM : 5.15 (m)

Bucket Hook Height	Radius of Load																			
	Max. Radius		8 m		7 m		6 m		5 m		4 m		3 m		2 m		Min. Radius			
	Front	Side	Front	Side	Front	Side	Front	Side	Front	Side	Front	Side	Front	Side	Front	Side	Front	Side		
7 m	2 292*	5.88	2 292*	5.88																
6 m	1 814*	6.84	1 814*	6.84																
5 m	1 789*	7.38	1 789*	7.38																
4 m	1 809*	7.75	1 809*	7.75																
3 m	1 873*	7.98	1 687	7.98																
2 m	1 983*	8.08	1 603	8.08	2 253*	1 631	3 459	2 070	4 447	2 673	5 949*	3 563	7 395*	5 013	10 424*	7 823	4 414*	2.15	4 414*	2.15
1 m	2 151*	8.05	1 569	8.05	2 336*	1 585	3 371	1 990	4 306	2 547	5 761	3 363	8 358	4 682	9 580*	7 233	3 714*	2.04	3 714*	2.04
0 m	2 399*	7.89	1 585	7.89			3 298	1 923	4 191	2 444	5 586	3 210	8 089	4 460	8 777*	6 946	4 393*	4 393*	4 877*	1.98
-1 m	2 775*	7.59	1 659	7.59			3 250	1 879	4 113	2 374	5 474	3 113	7 942	4 339	9 794*	6 838	6 042*	6 042*	5 962*	1.72
-2 m	3 141	7.15	1 812	7.15			3 236	1 867	4 078	2 342	5 423	3 069	7 890	4 296	11 699*	6 830	7 895*	7 895*	7 082*	1.59
-3 m	3 626	6.51	2 097	6.51																
-4 m	4 587	5.63	2 653	5.63																
-5 m	6 365*	4.34	4 047	4.34																

Lifting Capacity

- Notes: 1. Ratings are based on SAE J/ISO 10567
 2. Lifting capacity does not exceed 75% of tipping load with the machine on firm, level ground or 87% full hydraulic capacity.
 3. The load point is a hook (not standard equipment) located on the back of the bucket.
 4. *Indicates load limited by hydraulic capacity.
 5. 0m = Ground.



SH160-5 SHOE : 700 (mm)G ARM LENGTH = 3.05 (m) BOOM : 5.15 (m)
 BUCKET : SAE/PCSA 0.55 (m³) MAXIMUM REACH = 8.08 (m)

Bucket Hook Height	Max. Radius		Radius of Load																			
	Over Front	Over Side	8 m		7 m		6 m		5 m		4 m		3 m		2 m		Min. Radius					
7 m	2 292*	5.88	2 292*	5.88														2 635*	5.63	2 635*	5.63	
6 m	1 814*	6.84	1 814*	6.84			3 059*	3 059*										3 301*	5.66	3 301*	5.66	
5 m	1 789*	7.38	1 789*	7.38			2 600*	2 342	3 635*	3 104								3 701*	5.38	3 701*	5.38	
4 m	1 809*	7.75	1 809*	7.75			3 334*	2 288	4 102*	3 005	4 270*	4 081						4 341*	4.68	4 341*	4.68	
3 m	1 873*	7.98	1 737	7.98			3 645	2 212	4 589*	2 879	5 070*	3 873	5 892*	5 526	7 500*	7 500*	11 764*	11 764*	13 319*	1.73	13 319*	1.73
2 m	1 983*	8.08	1 652	8.08	2 253*	1 681	3 553	2 128	4 563	2 743	5 949*	3 650	7 395*	5 131	10 424*	8 002			4 414*	2.15	4 414*	2.15
1 m	2 151*	8.05	1 618	8.05	2 336*	1 634	3 465	2 048	4 421	2 617	5 910	3 450	8 569	4 800	9 580*	7 412			3 714*	2.04	3 714*	2.04
0 m	2 399*	7.89	1 635	7.89			3 392	1 981	4 307	2 514	5 735	3 298	8 299	4 578	8 777*	7 125	4 393*	4 393*	4 877*	1.98	4 877*	1.98
-1 m	2 775*	7.59	1 712	7.59			3 343	1 937	4 229	2 444	5 623	3 200	8 153	4 457	9 794*	7 017	6 042*	6 042*	5 962*	1.72	5 962*	1.72
-2 m	3 232	7.15	1 869	7.15			3 330	1 925	4 193	2 412	5 572	3 166	8 101	4 414	11 699*	7 009	7 895*	7 895*	7 082*	1.59	6 966*	1.21
-3 m	3 729	6.51	2 160	6.51					4 206	2 424	5 580	3 163	8 125	4 434	12 797*	7 073	10 052*	10 052*	9 074*	1.59	8 229*	1.08
-4 m	4 713	5.63	2 729	5.63							5 656	3 230	8 227	4 518	11 472*	7 213	12 709*	12 709*	11 417*	1.59	10 263*	1.08
-5 m	6 365*	4.34	4 152	4.34									7 022*	4 695	9 232*	7 459	12 681*	12 681*	13 219*	1.89	13 219*	1.89

SH160-5 SHOE : 700 (mm)G ARM LENGTH = 2.62 (m) BOOM : 5.15 (m)
 BUCKET : SAE/PCSA 0.62 (m³) MAXIMUM REACH = 7.76 (m)

Bucket Hook Height	Max. Radius		Radius of Load																				
	Over Front	Over Side	7 m		6 m		5 m		4 m		3 m		2 m		Min. Radius								
6 m	1 974*	6.46	1 974*	6.46			3 028*	3 028*										3 851*	5.23	3 851*	5.23		
5 m	1 938*	7.03	1 938*	7.03	2 033*	2 033*	3 952*	3 054	4 157*	4 157*								4 160*	4.91	4 160*	4.91		
4 m	1 957*	7.42	1 957*	7.42	3 229*	2 259	4 472*	2 963	4 753*	4 011								5 214*	4.02	5 214*	4.02		
3 m	2 024*	7.65	1 864	7.65	3 621	2 193	4 673	2 846	5 534*	3 811	6 604*	5 402	8 828*	8 538				6 699*	2.11	6 699*	2.11		
2 m	2 144*	7.76	1 774	7.76	3 540	2 119	4 535	2 721	6 082	3 604	8 041*	5 030	10 920*	7 746				3 846*	2.46	3 846*	2.46		
1 m	2 329*	7.72	1 743	7.72	3 463	2 049	4 408	2 608	5 876	3 425	8 492	4 741	7 485*	7 291				4 216*	2.43	4 216*	2.43		
0 m	2 608*	7.56	1 770	7.56	3 404	1 995	4 311	2 521	5 728	3 296	8 278	4 565	8 023*	7 117				5 518*	2.33	5 518*	2.33		
-1 m	3 037*	7.25	1 867	7.25	3 372	1 966	4 251	2 468	5 643	3 222	8 178	4 483	9 764*	7 075				6 741*	2.02	6 741*	2.02		
-2 m	3 538	6.78	2 063	6.78			4 235	2 453	5 617	3 199	8 162	4 469	12 294*	7 107	8 425*	8 425*	7 632*	1.59	7 879*	1.46			
-3 m	4 167	6.11	2 431	6.11			4 277	2 491	5 651	3 229	8 218	4 516	12 279*	7 203	11 030*	11 030*	9 999*	1.59	9 131*	1.08			
-4 m	5 502	5.16	3 192	5.16					5 768	3 331	8 227*	4 631	10 652*	7 377	14 308*	14 308*	12 832*	1.59	12 137*	1.34			
-5 m	6 371*	3.70	5 475	3.70														7 519*	3.14	7 104	3.14		

SH160-5 SHOE : 700 (mm)G ARM LENGTH = 2.23 (m) BOOM : 5.15 (m)
 BUCKET : SAE/PCSA 0.70 (m³) MAXIMUM REACH = 7.38 (m)

Bucket Hook Height	Max. Radius		Radius of Load																			
	Over Front	Over Side	7 m		6 m		5 m		4 m		3 m		2 m		Min. Radius							
6 m	2 620*	6.00	2 620*	6.00					4 289*	4 207								4 273*	4.85	4 273*	4.85	
5 m	2 584*	6.61	2 528	6.61			4 319*	3 015	4 590*	4 114								4 680*	4.46	4 680*	4.46	
4 m	2 624*	7.02	2 222	7.02	2 725*	2 235	4 767	2 932	5 172*	3 957	5 839*	5 661						6 766*	3.21	6 766*	3.21	
3 m	2 732*	7.27	2 037	7.27	3 604	2 180	4 644	2 822	5 929*	3 762	7 212*	5 294	10 050*	8 243				7 523*	2.56	7 523*	2.56	
2 m	2 916*	7.38	1 936	7.38	3 533	2 116	4 515	2 707	6 035	3 566	8 574*	4 942	7 025*	7 025*				4 986*	2.85	4 986*	2.85	
1 m	3 200*	7.35	1 904	7.35	3 468	2 056	4 401	2 605	5 849	3 405	8 425	4 691	6 139*	6 139*				5 030*	2.78	5 030*	2.78	
0 m	3 300	7.17	1 942	7.17	3 421	2 013	4 319	2 531	5 724	3 296	8 260	4 555	7 788*	7 121				6 540*	2.64	6 540*	2.64	
-1 m	3 518	6.85	2 064	6.85			4 275	2 492	5 662	3 242	8 198	4 504	10 325*	7 127				7 968*	2.29	7 968*	2.29	
-2 m	3 947	6.34	2 312	6.34			4 280	2 496	5 658	3 239	8 213	4 516	12 851*	7 187	9 483*	9 483*	9 308*	1.68	9 308*	1.68		
-3 m	4 789	5.62	2 798	5.62					5 720	3 293	8 299	4 587	11 672*	7 310	12 734*	12 734*	11 584*	1.59	10 800*	1.19		
-4 m	6 493*	4.56	3 908	4.56							7 566*	4 739	9 739*	7 521	12 931*	12 931*	13 484*	1.87	13 484*	1.87		